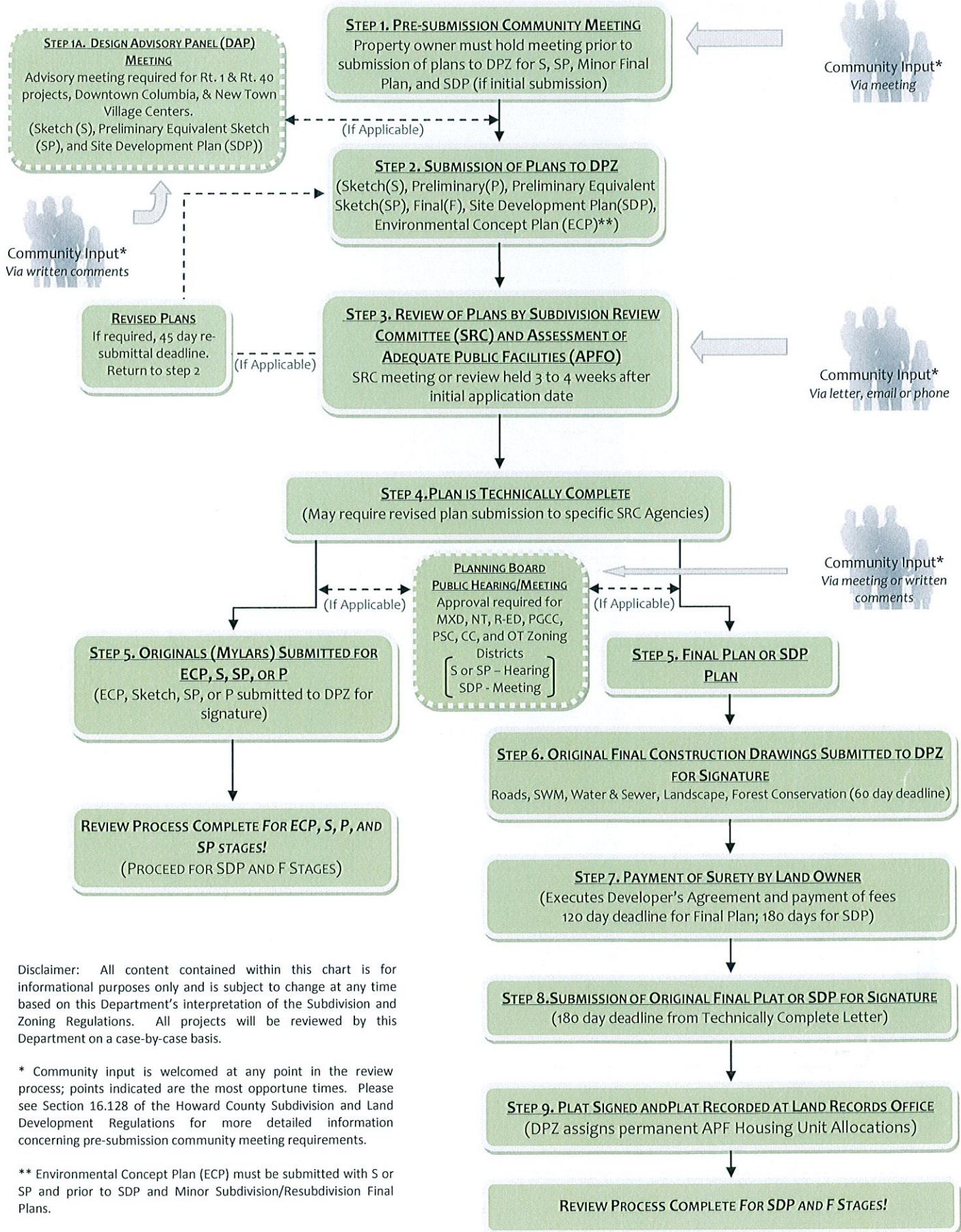


# SUBDIVISION AND LAND DEVELOPMENT REVIEW PROCESS



Disclaimer: All content contained within this chart is for informational purposes only and is subject to change at any time based on this Department's interpretation of the Subdivision and Zoning Regulations. All projects will be reviewed by this Department on a case-by-case basis.

\* Community input is welcomed at any point in the review process; points indicated are the most opportune times. Please see Section 16.128 of the Howard County Subdivision and Land Development Regulations for more detailed information concerning pre-submission community meeting requirements.

\*\* Environmental Concept Plan (ECP) must be submitted with S or SP and prior to SDP and Minor Subdivision/Resubdivision Final Plans.